



# **CLINICAL CASES**

## **ORTHOGNATHIC TEMPLATE**

**SENSITIVE CONTENT**

**This document may contain violent or explicit content**



**[www.zcare.tn](http://www.zcare.tn)**

## RECONSTRUCTION ASSISTED BY 3D MODELING

Surgeon  
Hospital

**Dr MAROUEN BEN REJEB**  
**Hospital Charles-Nicolle**

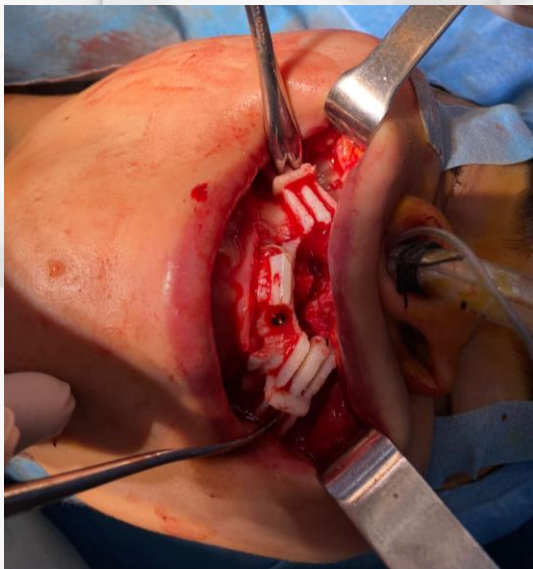
## PLANNING

The delineation was performed by Dr MAROUEN BEN REJEB, on the CT-scan and MRI was not needed.



## SURGERY

Cutting Guides in Orthognathic Surgery. When performing orthognathic surgery to correct the position of the upper and lower jaws one can use a wafer intraoperatively to position the jaws and bend plates intraoperatively, or use 3D printed cutting guides to perform accurate osteotomies in 3D preplanned waferless operations prior to placement of patient-specific fixating plates (B).



(A)



(B)