



CLINICAL CASES

BONE TUMOR

SENSITIVE CONTENT

This document may contain violent or explicit content



www.zcare.tn

RECONSTRUCTION ASSISTED BY 3D MODELING

Surgeon
Hospital

Dr MAHMOUD SMIDA
Mohamed-Kassab Institute of Orthopedics

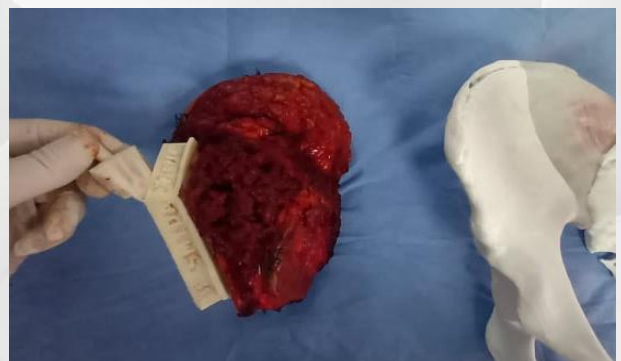
PLANNING

The tumor delineation was performed by Dr MAHMOUD SMIDA, on the CT-scan and MRI was needed.



SURGERY

The 3D-printed resection guide is easy to use and shows promise in the field of orthopedic oncology, with its application in bone tumor resection and reconstruction with a structural bone allograft or 3D-printed implant.



RECONSTRUCTION ASSISTED BY 3D MODELING

Surgeon

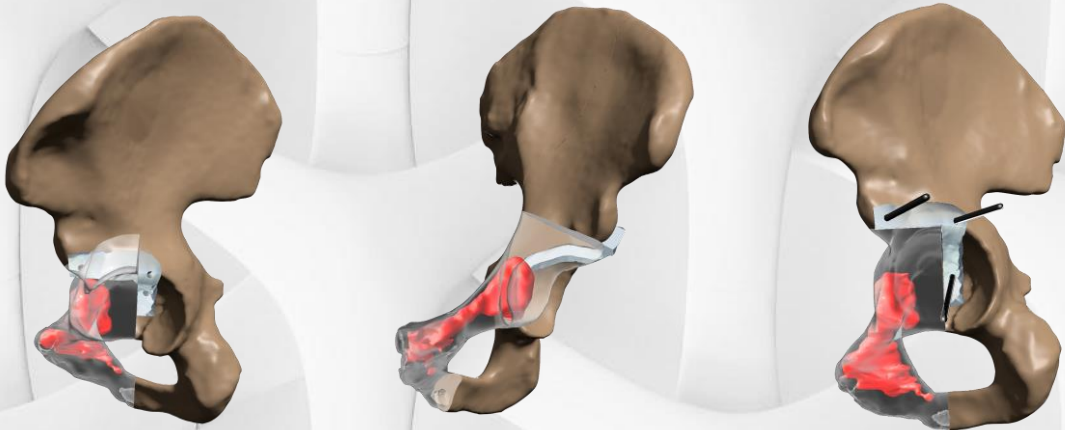
Dr MAHMOUD SMIDA

Hospital

Mohamed-Kassab Institute of Orthopedics

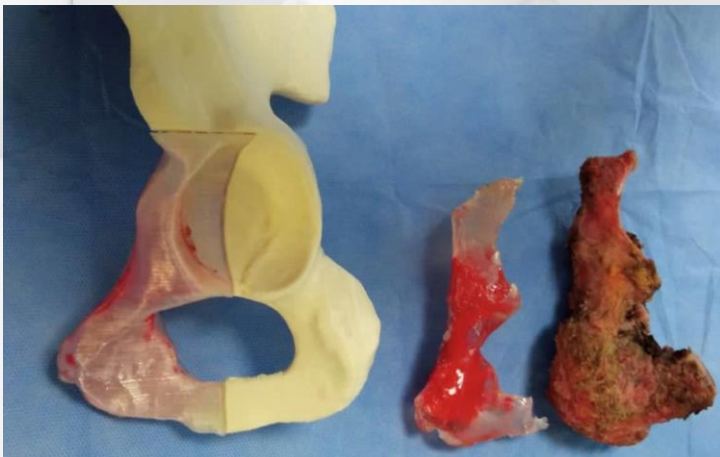
PLANNING

The tumor delineation was performed by Dr MAHMOUD SMIDA, on the CT-scan and MRI was needed.



SURGERY

The 3D-printed resection guide is easy to use and shows promise in the field of orthopedic oncology, with its application in bone tumor resection and reconstruction with a structural bone allograft or 3D-printed implant.



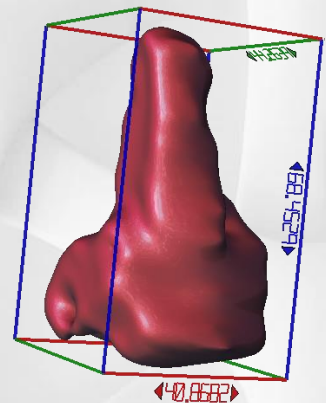
RECONSTRUCTION ASSISTED BY 3D MODELING

Surgeon
Hospital

Dr MAHMOUD SMIDA
Carthagene Clinic

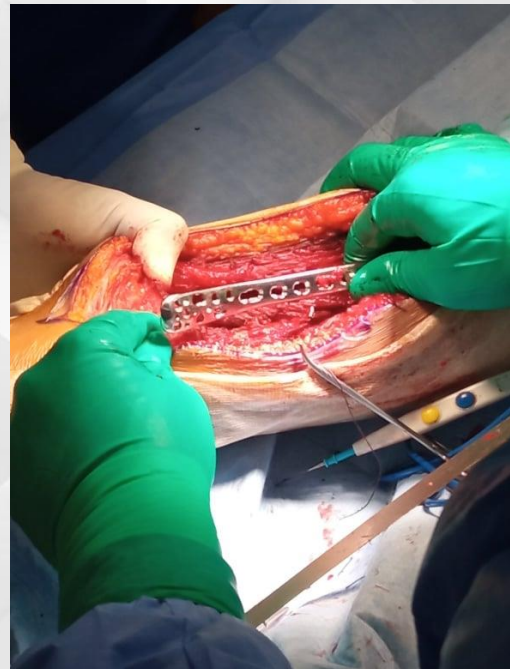
PLANNING

The tumor delineation was performed by Dr MAHMOUD SMIDA, on the CT-scan and MRI was needed.



SURGERY

The 3D-printed model is easy to use and shows promise in the field of orthopedic oncology, with its application in bone tumor resection and reconstruction with a structural bone allograft or 3D-printed implant.



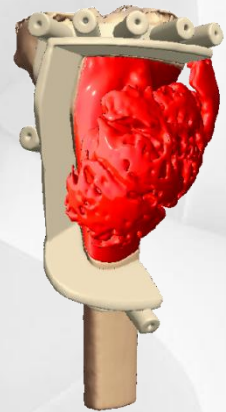
RECONSTRUCTION ASSISTED BY 3D MODELING

Surgeon
Hospital

Dr MOHAMED AMINE GHARBI
Monji Slim Hospital of Tunis

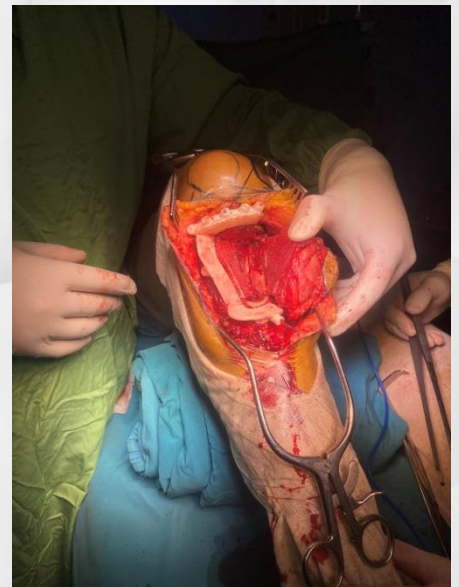
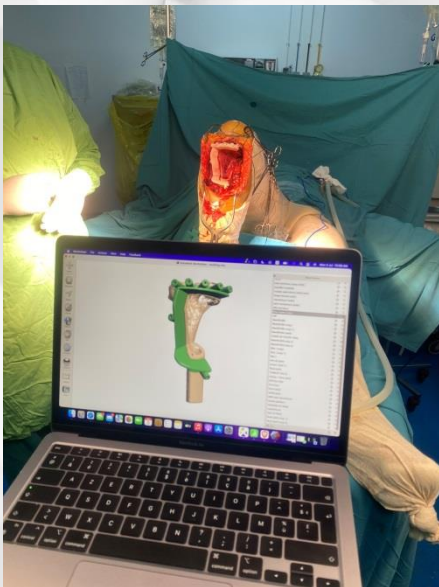
PLANNING

The tumor delineation was performed by Dr MOHAMED AMINE GHARBI, on the CT-scan and MRI was needed.



SURGERY

The 3D-printed resection guide is easy to use and shows promise in the field of orthopedic oncology, with its application in bone tumor resection and reconstruction with a structural bone allograft or 3D-printed implant.



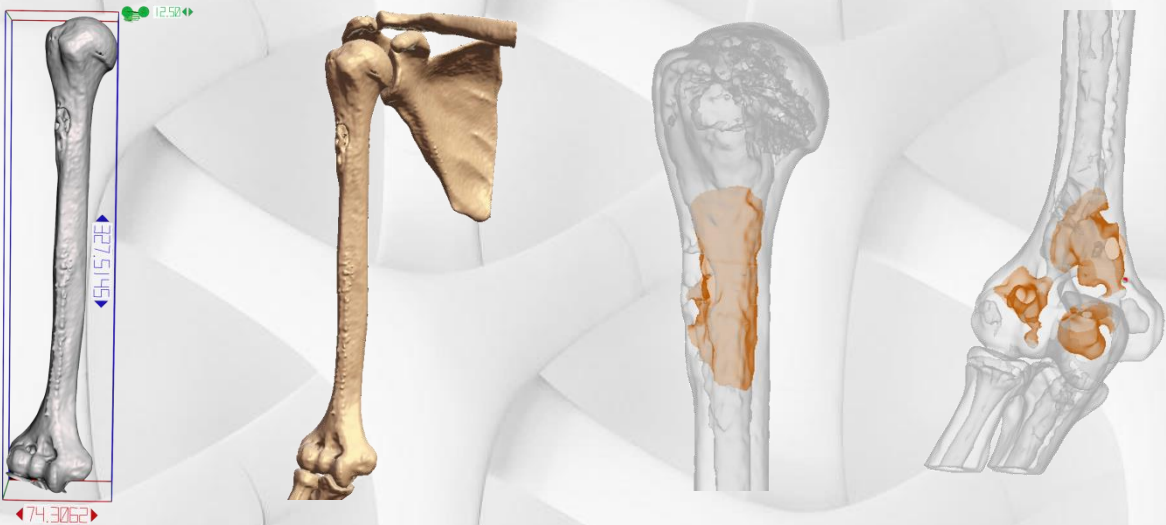
RECONSTRUCTION ASSISTED BY 3D MODELING

Surgeon
Hospital

Dr KHALIL AMRI
Main Military Instruction Hospital of Tunis

PLANNING

The tumor delineation was performed by Dr KHALIL AMRI, on the CT-scan and MRI was needed.



SURGERY

The 3D-printed model is easy to use and shows promise in the field of orthopedic oncology, with its application in bone tumor resection and reconstruction with a structural bone allograft or 3D-printed implant.

